



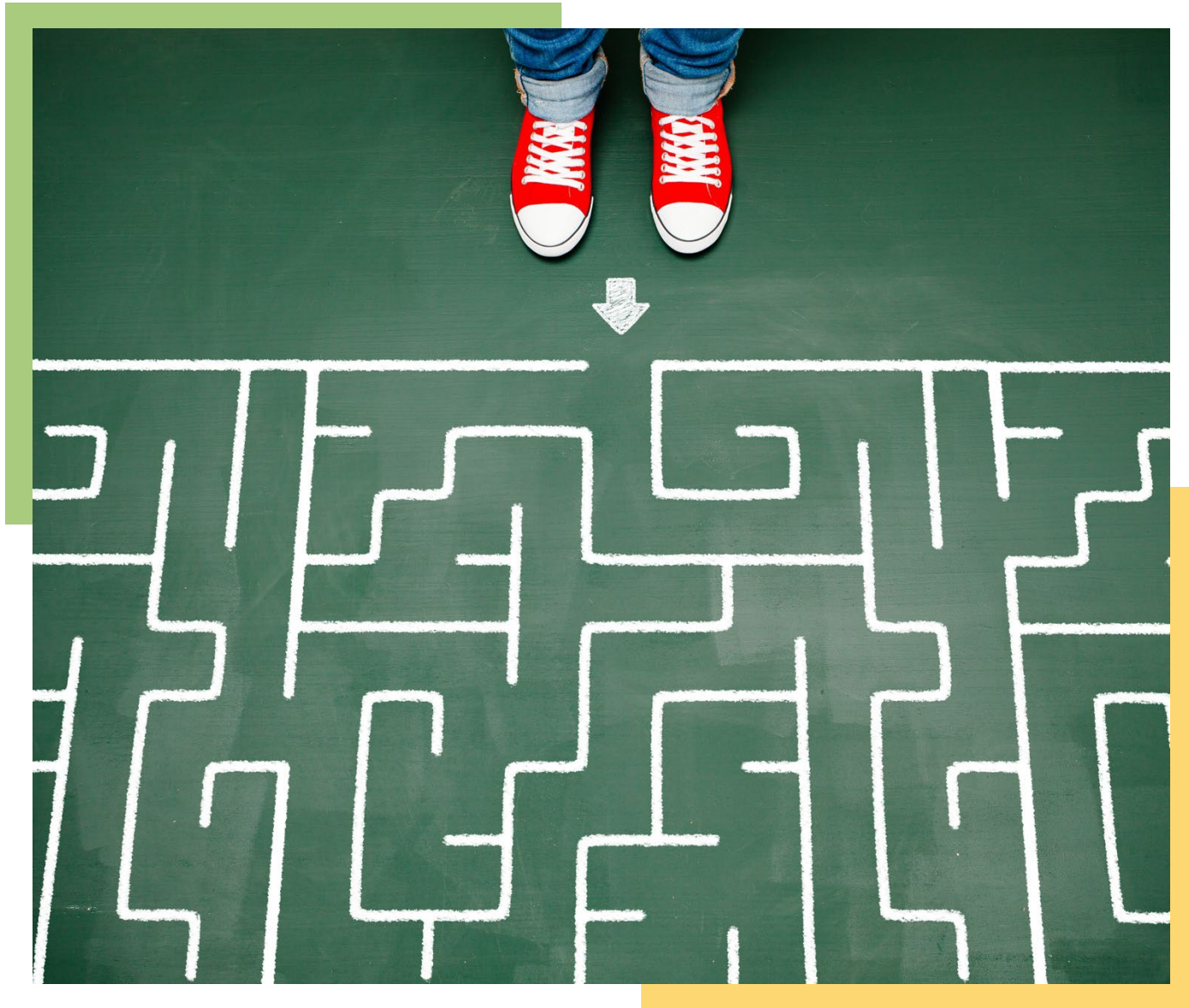
Introduction to the Head Start Health Manager Orientation Guide

Date:

1/18/2024

Presenters:

Beth Lowe



National Center on

Health, Behavioral Health, and Safety



Objectives

- Learn about the role of the health manager and core areas of health, behavioral health, and safety that the health manager may support
- Become familiar with the Health Manager Orientation Guide and the chapter on oral health.
- Identify how dental hygienist liaisons can use it to support the work of the health manager



National Center on

Health, Behavioral Health, and Safety



The Health Manager Orientation Guide

- For anyone responsible for the management of health services across all Head Start and Early Head Start settings
- A foundation for new health managers and a resource for health managers who have been in the role for a while
- Full of tips, strategies, and resources to support professional development





Head Start Programs and Health Services



Core Topics

- Regulations and Guidance
- What is a Health Manager
- Role of Health Services in Head Start Programs
- Program Planning
- Professional Development for Health Managers



Topical Chapters

- Every chapter in the HMOG focuses on a different core area of health, behavioral health, or safety that is essential for the health manager to understand.





Considerations for Infants and Toddlers

Many chapters include considerations for caring for infants and toddlers.

- May be a sub-section of the chapter
- May be integrated throughout the chapter





Considerations for Expectant Families

Some chapters include considerations for pregnant women and pregnant people.

- May be a sub-section of the chapter
- See also the stand-alone chapter on Services to Expectant Families





Sharing Information with Staff and Families

Each chapter ends with a section on the health manager's role in training staff and collaborating with families, including:

- Professional development resources
- Tips for family engagement





Physical Health



Core Topics

- Medical Home and Well-Child Checkups
- Immunizations
- Vision and Hearing Screening
- Developmental Screenings
- Common Childhood Illnesses



Safety and Unintentional Injury Prevention

Core Topics

- Culture of Safety and Active Supervision
- Safe Indoor Environments
- Safe Outdoor Environments
- School Bus Safety Practices
- Child Passenger Safety in Motor Vehicles
- Safety and Unintentional Prevention
- Sharing Information about Safety





Infection Control



Core Topics

- The Daily Health Check
- Exclusion for Illness
- Reporting to Local Public Health Authorities
- Standard Precautions
- Hand Hygiene
- Diapering and Toileting
- Safe and Effective Cleaning, Sanitizing, and Disinfecting
- Healthy Air
- Disaster Preparedness Plans for Epidemics/Pandemics



Medication Administration



Core Topics

- Medication Administration Procedures
- Administering Medication
- Identification, Communication, and Documentation of Medications
- Individual Health Care Plans
- Storage and Disposal of Medications



Recordkeeping and Reporting

Core Topics

- Health Record Management
- Health Reporting





Mental Health and Wellness

Core Topics

- Engaging Community Partners to Support Mental Health
- Infant and Early Childhood Mental Health Consultation
- Social and Emotional Developmental Milestones
- Building Trauma-informed Services
- Depression
- Substance Use





Children with Special Health Care Needs

Core Topics

- Identification of Known or Suspected Special Health Care Needs
- Individualized Planning for CSHCN
- A Coordinated Approach to CSHCN
- Common Special Health Care Needs





Nutrition and Physical Activity



Core Topics

- Nutrition Staff and Consultants
- Assessing Children's Nutritional Needs
- Nutrition Services and Food Safety
- Child Feeding Practices
- Choking Hazards
- Physical Activities in Learning Environments



Oral Health

Core Topics

- Oral Health Status
- Follow-up Oral Health Care
- Oral Health Promotion and Disease Prevention
- Oral Injury Prevention and First Aid
- Traumatic Experiences and Oral Health
- Oral Health Considerations for Pregnant People





Chapters in Development

- Environmental Health
- Staff Wellness
- Emergency Preparedness and Recovery
- Health Data
- Community Partnerships to Support Health and Mental Health Services
- Child Abuse and Neglect





Tour of Health Manager Orientation Guide and Chapter on Oral Health

- Google “Head Start” and “Health Manager Orientation Guide”
- Bookmark <https://eclkc.ohs.acf.hhs.gov/health-services-management/health-manager-orientation-guide/health-manager-orientation-guide>

The screenshot shows the HEAD START | ECLKC website. The header includes the U.S. Department of Health & Human Services and Administration for Children & Families logos, along with navigation links for Upcoming Events, Contact Us, and Español. The main navigation bar features 'About', 'Topics', and 'Policy & Regulations' links, and a search bar. Below the navigation is a blue banner with the text 'Find a Head Start job near you or anywhere in the U.S.' and a large image of a woman interacting with children. The main content area is titled 'Health Manager Orientation Guide' and includes a 'Home' link, a 'Share' button, and a 'Print' button. The page content is organized into two columns. The left column has a heading 'Health Manager Orientation Guide' and a list of topics: 'Expand All', 'Head Start Programs and Health Services', 'Health Services Management', 'Physical Health', 'Safety and Unintentional Injury Prevention', 'Infection Control', 'Medication Administration', 'Recordkeeping and Reporting', 'Oral Health', 'Mental Health and Wellness', 'Children with Special Health Care Needs', and 'Nutrition and Physical Activity'. The right column has a heading 'Health Manager Orientation Guide' and a paragraph of text: 'This guide is a starting point to help health managers determine what needs their attention, how to structure their work, and ways to continue to grow and learn. Organized into chapters based on the core areas of health and behavioral health, it may be read from beginning to end or referenced as needed. Each chapter begins with a list of applicable rules, regulations, guiding standards, and considerations related to health equity and social determinants of health. The guide includes actionable tips and strategies for the health manager and considerations related to trauma. It also features tips and resources that support professional development for health managers and staff, as well as collaboration with families. Programs may choose to incorporate all or part of this guide into professional development activities based on staff interest and needs. Some sections may also be useful to other program staff, including managers, education staff, family advocates, and transportation staff.' Below this text is a green box with the heading 'Who should use this guide?' and a paragraph: 'This guide is for anyone responsible for the management and oversight of health services across all Head Start and Early Head Start settings. In many programs, the person primarily responsible for this is the health manager; in some programs, they are called health coordinators, specialists, or directors of comprehensive services. Often, there is a team of people who work together to manage health services. The Health Manager Orientation Guide provides a foundation for new health managers and features updated information and resources for health managers who have been in the role for a while.'



Questions?



National Center on
Health, Behavioral Health, and Safety



Thank You!

Subscribe to our mailing list at
<https://go.edc.org/HBHS-Contacts>



National Center on
Health, Behavioral Health, and Safety

Stay Connected with the



Office of Head Start

Follow us on Social Media



Head Start
Facebook



Head Start
(@HeadStartgov)/X



Head Start
Instagram

Join Us



Social Network for Early Childhood Professionals
<https://bit.ly/mypeers-ecklc>



National Center on
Health, Behavioral Health, and Safety



National Center on Health, Behavioral Health, and Safety

888-227-5125

health@ecetta.info

<https://eclkc.ohs.acf.hhs.gov/health>

This presentation is supported by the Administration for Children and Families (ACF) of the United States (U.S.) Department of Health and Human Services (HHS) as part of a financial assistance award totaling \$8,200,000 with 100% funded by ACF. The contents are those of the author(s) and do not necessarily represent the official views of, nor an endorsement by, ACF/HHS or the U.S. Government.



National Center on

Health, Behavioral Health, and Safety

Check out CE Smart from ADHA!

https://mymembership.adha.org/ce_smart#

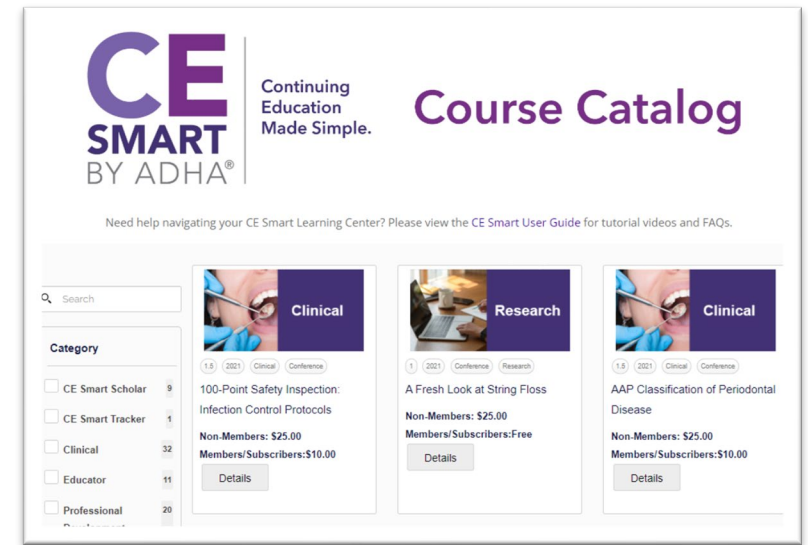
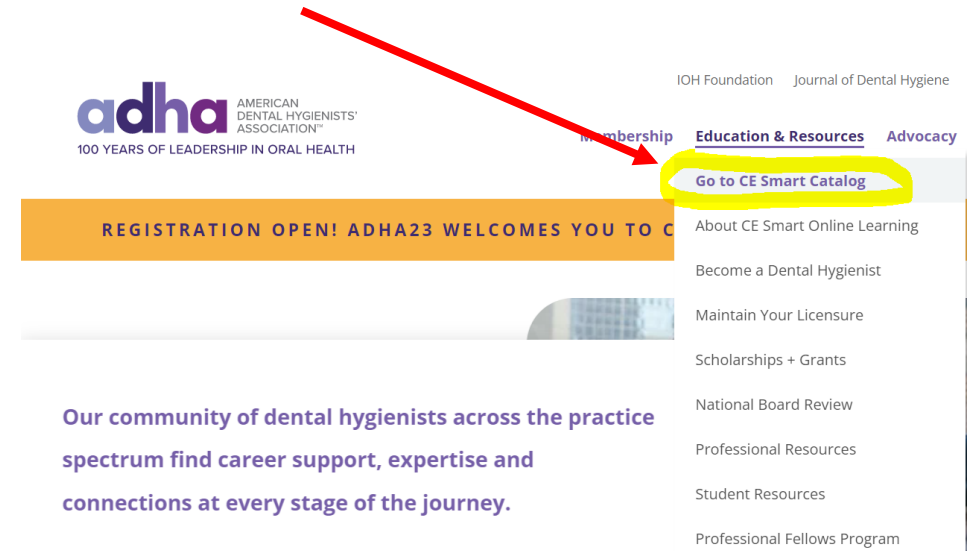
All ADHA members have access to:

- Unlimited access to FREE and highly discounted CE
- FREE CE Smart Tracker (\$30 value) to track all the credits you earn from all sources
- Expert-led courses and webinars on trending topics, with an always-growing course catalog
- On-demand access with high-level content ready when you want it.

Non-ADHA members have access to all the same content and the CE Smart Tracker!

- Courses are priced individually based on the number of CEs provided.

Questions?
Email education@adha.net



Links to CE Certificates

Live: [Access to Live CE Survey and Certificate Here](#)

Recorded: [Access to Recorded CE Survey and Certificate Here](#)