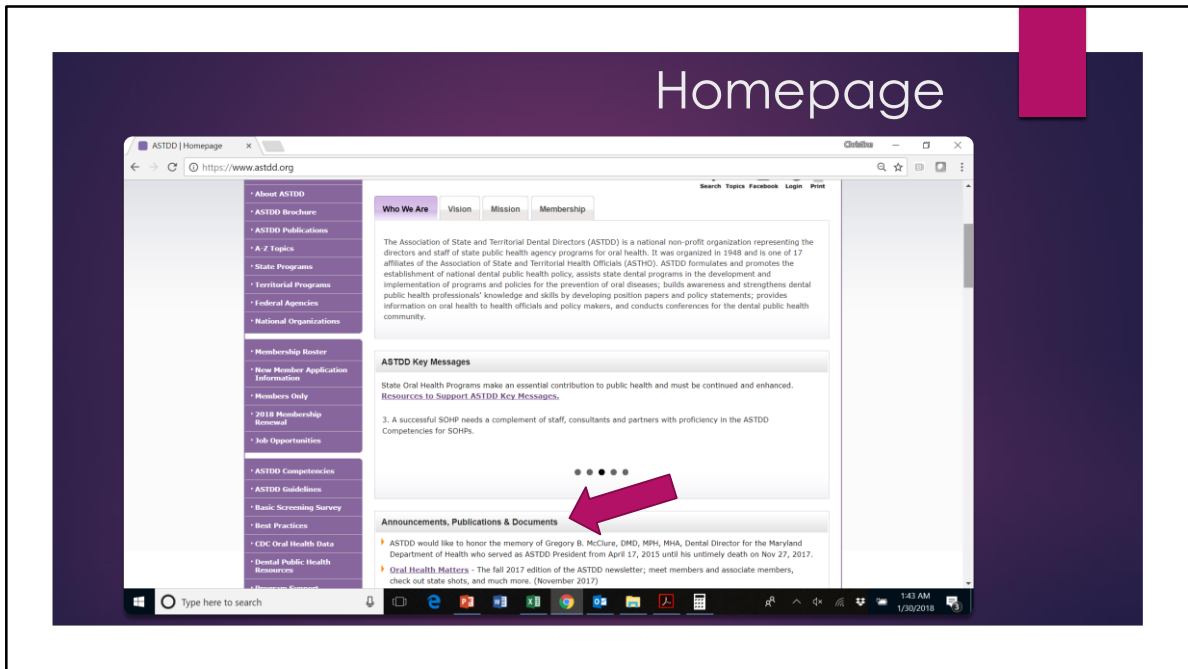


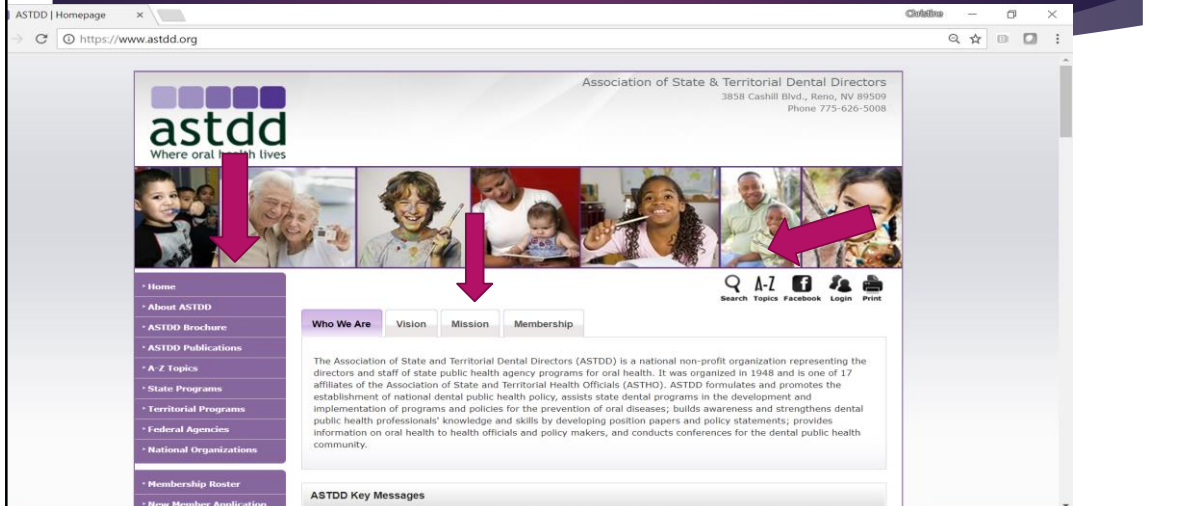


Welcome to this tutorial on how to navigate the Association of State and Territorial Dental Directors' website.



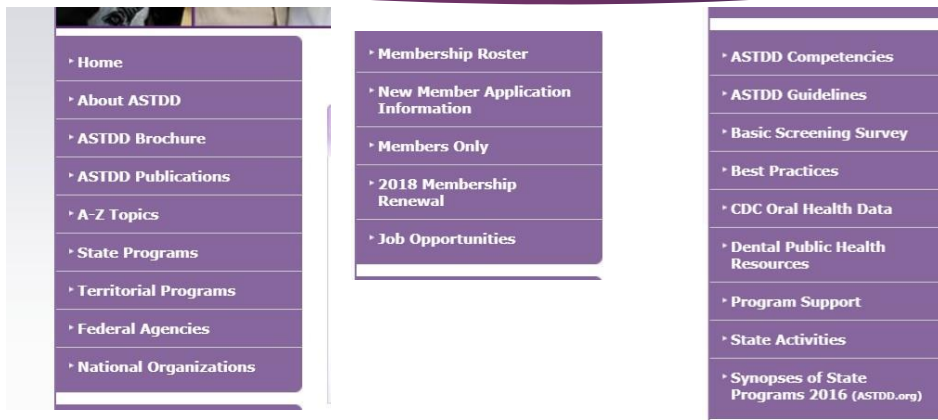
The first thing to know is that our newest resources are usually posted on the homepage and they stay there for a few months before rotating off so we can feature newer resources.

Three ways to navigate the website



There are three ways to navigate the website: using the upper and left hand navigation tabs, using the A-Z feature, or using the search function. The navigation tabs across the top of the screen provide basic information about who we are, our vision and mission, and a brief overview of our membership.

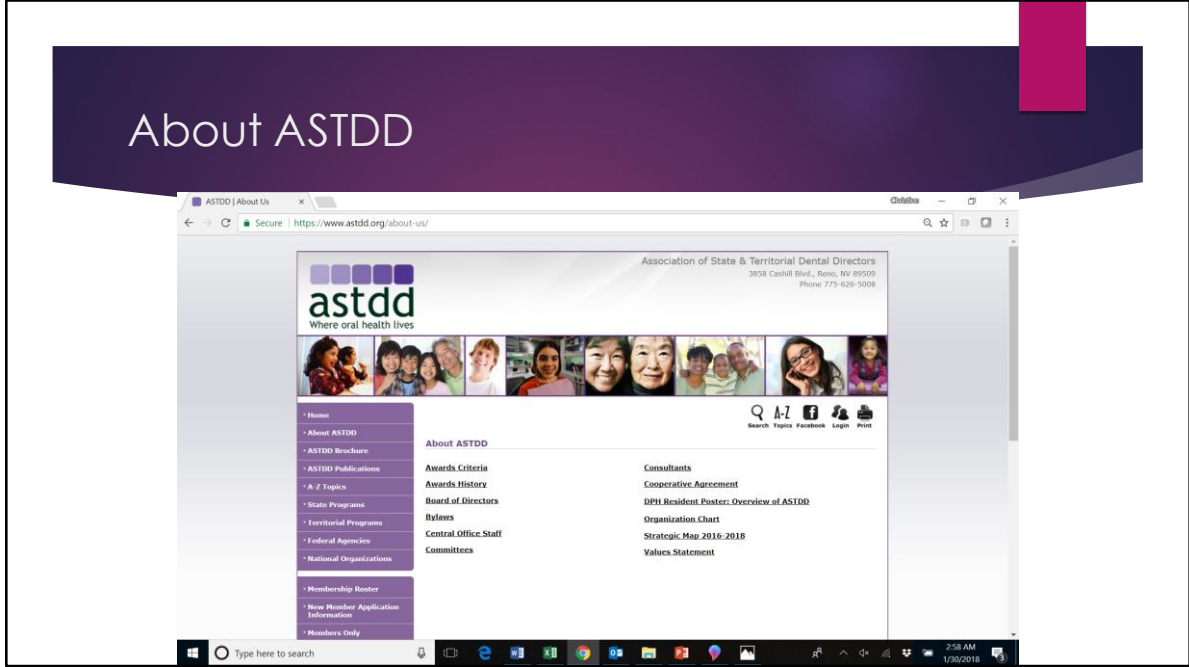
Left hand navigation tabs



The left hand navigation tabs are grouped into three clusters. The top cluster (or in the case of this slide, the left most cluster) relates to organizational information about ASTDD, state and territorial oral health programs, and federal agency and national organization partners.

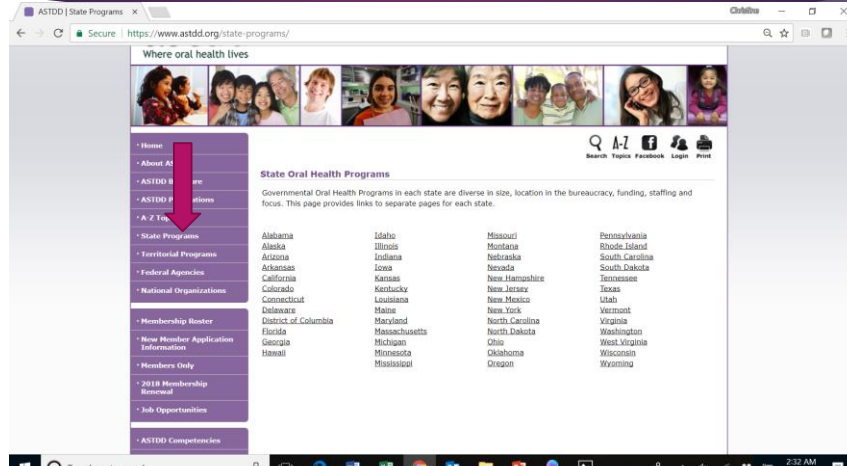
The middle cluster relates to membership in ASTDD and job opportunities in state oral health programs and other organizations.

The bottom cluster, Or on this slide, the right most cluster) links to key resources on our website or to the CDC Oral Health Data portal.

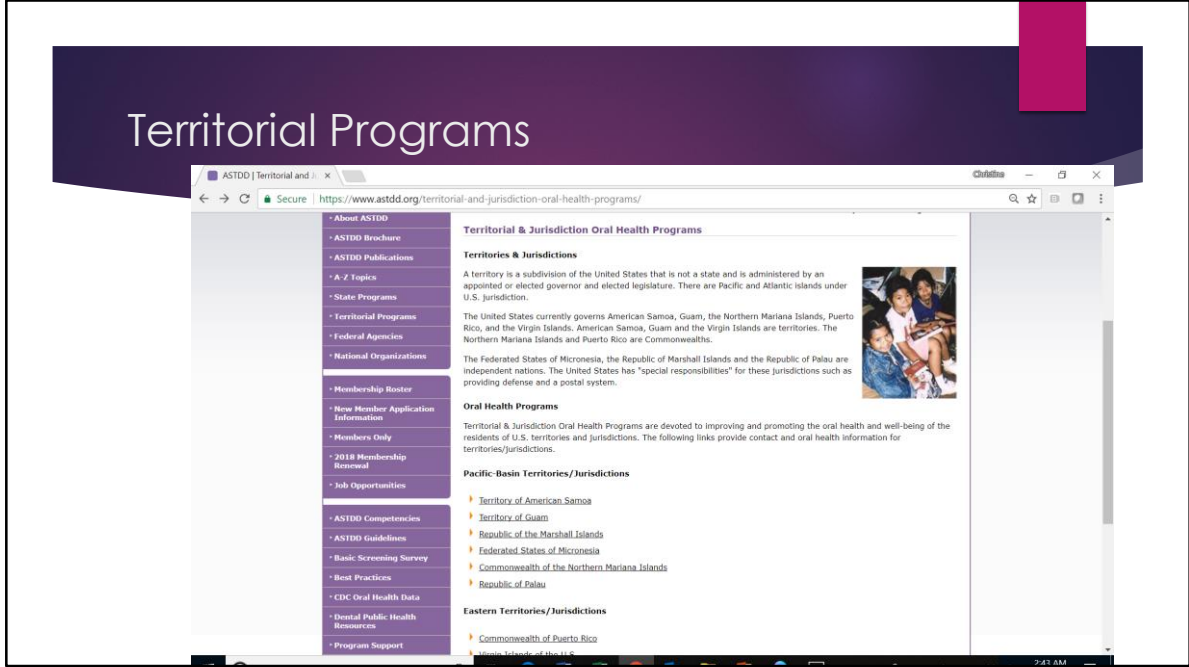


The About ASTDD webpage contains important information about how ASTDD is organized. For example, you can access the Board of Directors list, the ASTDD bylaws, ASTDD committee descriptions and contacts, contact information for ASTDD’s consultants, our strategic plan and organizational chart.

State Programs

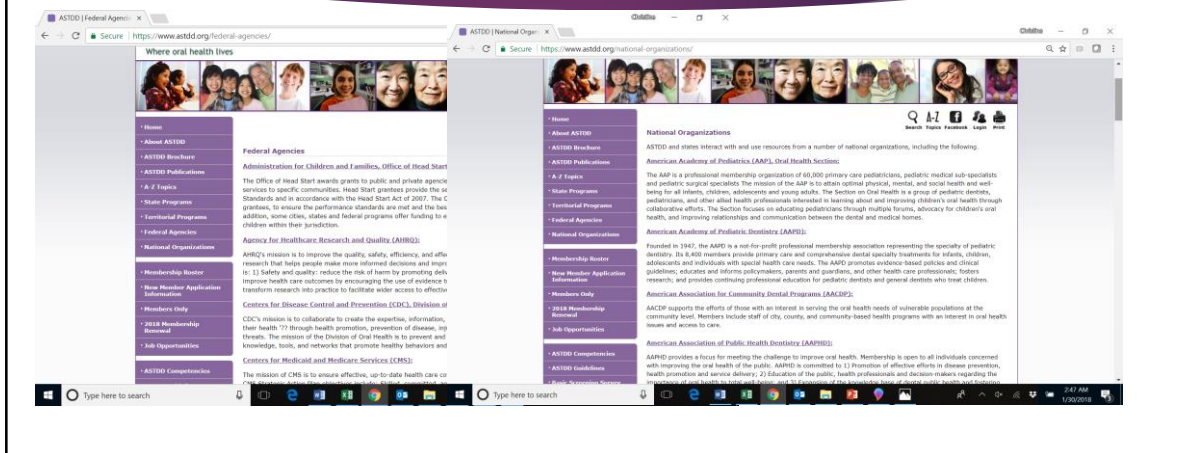


Each state oral health program has an individual webpage on the ASTDD website. First click on the left hand navigation tab labeled “state programs,” then click on the state name. Each state page includes links to the state oral health program’s website, their state oral health plan and basic screening survey reports if they have them, and to the CDC website where their state data are displayed on My Water’s Fluoride and the National Oral Health Surveillance System.



We have similar information for the U.S. territories and jurisdictions.

Federal Agencies and National Organizations



These Federal Agency and National Organization pages provide brief descriptions with links to their websites for some key players in the oral health arena.



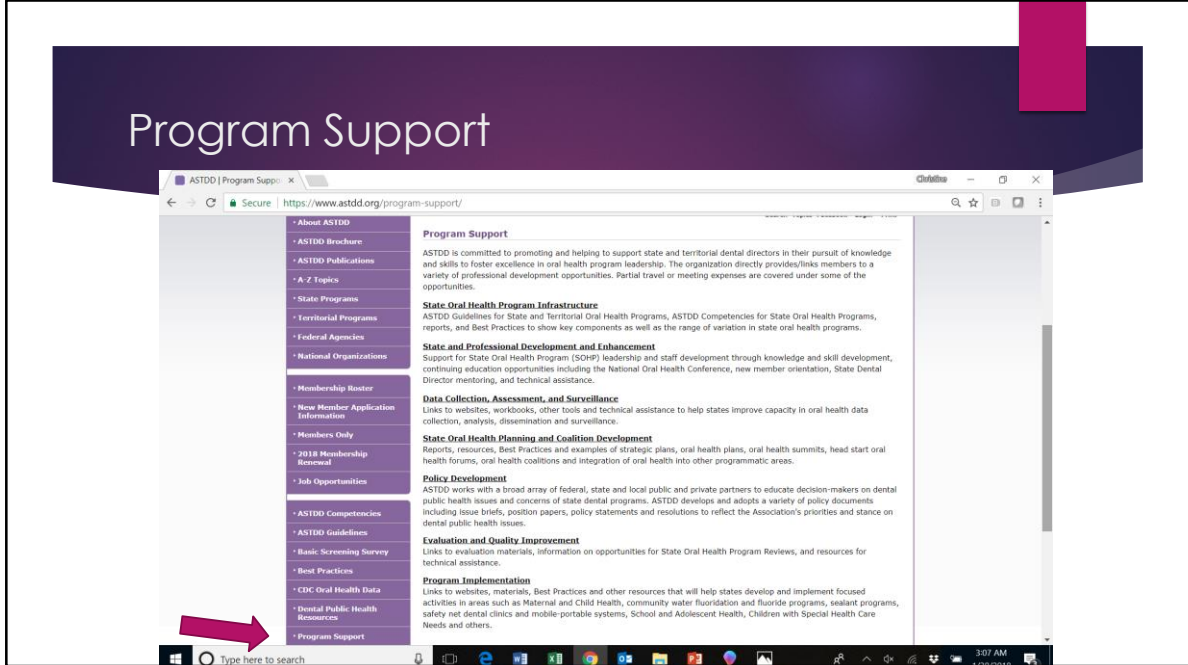
The Membership cluster of tabs shows webpages about who our members are, how to join ASTDD and renew membership, and a link to the members only section.

You will need to be a member to access the Membership Roster and the Members Only section. Login is required with your email and the password you selected when you joined; you may periodically need to change your password.

Members Only includes minutes of Board of Directors meetings, the ASTDD calendar of committee calls and webcasts (all times are listed as Eastern Time zone), archived ASTDD Weekly Digests, Basic Screening Survey toolkits (no charge to members), ASTDD Annual State Synopses Reports with data by state, annual ASTDD Committee reports, recordings and slides of all archived ASTDD webcasts, and other resources specifically intended for ASTDD members.



The bottom cluster of tabs takes you to key resources including Competencies and Guidelines for State and Territorial Oral Health Programs, the Basic Screening Survey Toolkit, Best Practice Approach Reports, CDC Oral Health Data web portal, Dental Public Health Resources Committee webpage to access white papers and issue briefs, the most recent ASTDD State Synopses Summary, and the Program Support and State Activities pages. Let me tell you a bit more about the last two tabs.



Clicking the Program Support tab takes you to a page with multiple resources. The State Oral Health Program Infrastructure link includes many of ASTDD’s foundational documents for building and sustaining a state oral health program.

The State and Professional Development and Enhancement page includes committee materials and resources that promote and support leadership and staff development through orientation, peer support through mentoring, professional development through workshops and webcasts, and links to other learning and leadership opportunities.

The Data Collection, Assessment, and Surveillance page includes key resources from the Data and Surveillance Committee for needs assessment, data collection and analysis, oral health surveillance and information dissemination.

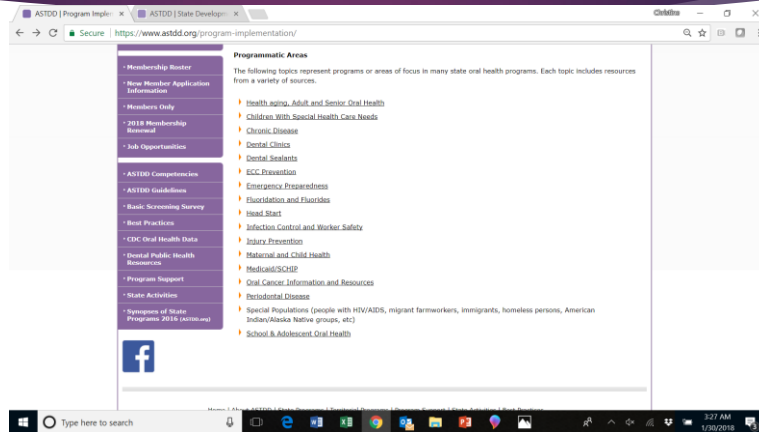
State Oral Health Planning and Coalition Development includes resources for planning, developing, implementing, and evaluating oral health promotion and disease prevention efforts with partners.

You can also access the Dental Public Health Resources webpage through the Policy Development link.

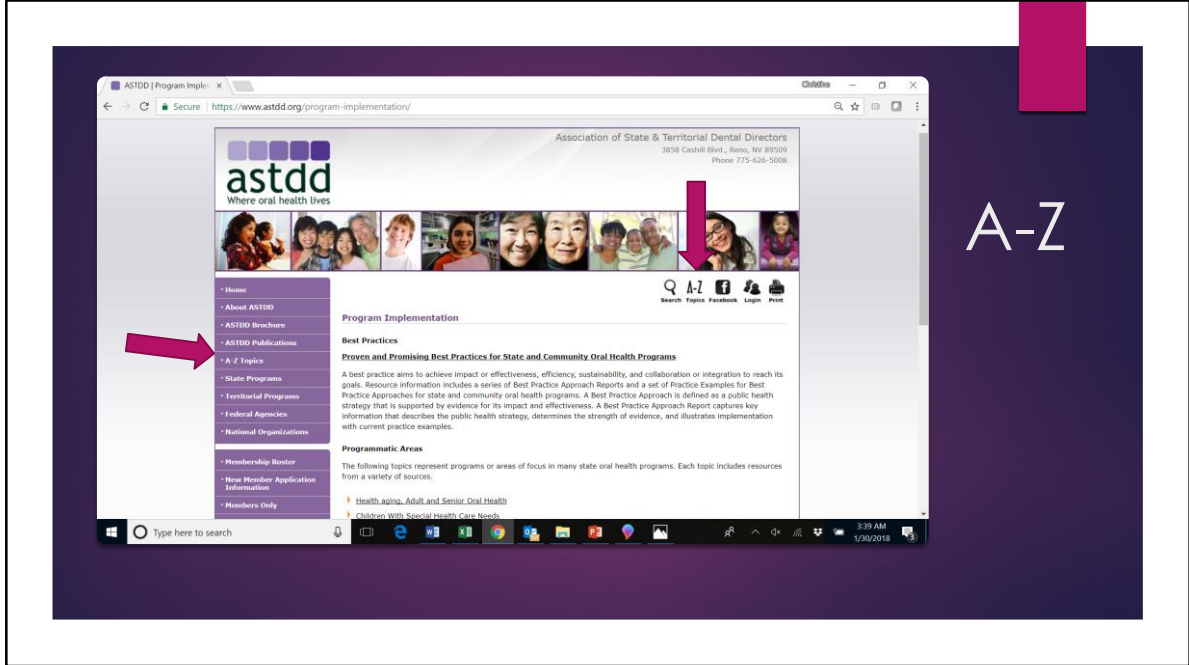
The Evaluation and Quality Improvement page provides tools and resources from ASTDD and CDC, followed by materials from many other sources.

The Program Implementation link is discussed separately as it covers many topics.

Program Implementation

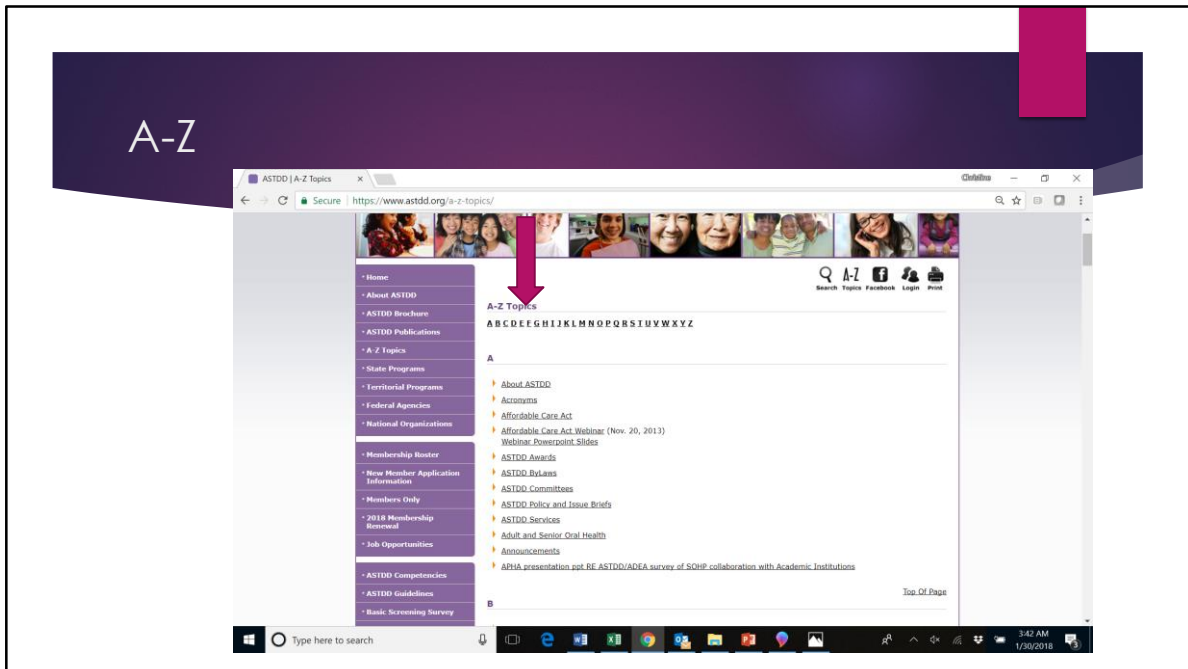


In addition to being one pathway to Best Practice Approach Reports, this page connects to other ASTDD committees or focus areas.

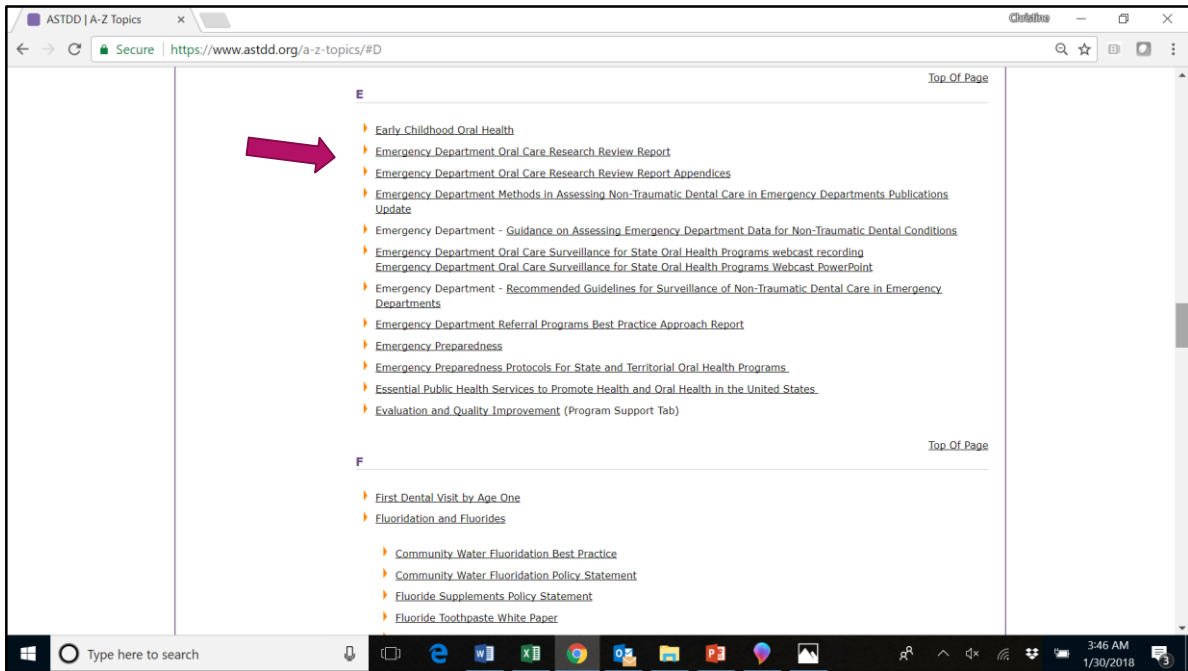


Using the A-Z tabs, however, may be an easier way to find information on any of these topics as well as a host of other topics.

The A-Z list is accessed by one of the purple left hand navigation tabs or through the A-Z icon on the upper right hand side of the screen.

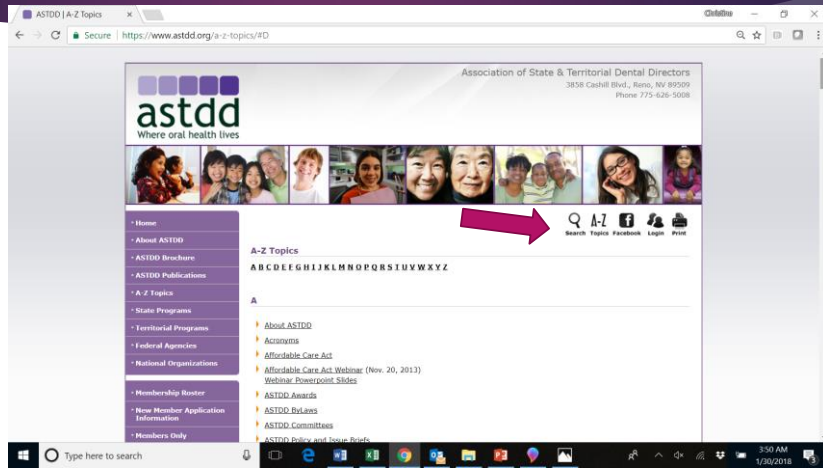


Once you click on A-Z, an alphabetical list of hundreds of resources on the website appears. Documents are usually listed by their titles. For example, if you are interested in use of emergency departments for oral health problems, click on “E.”

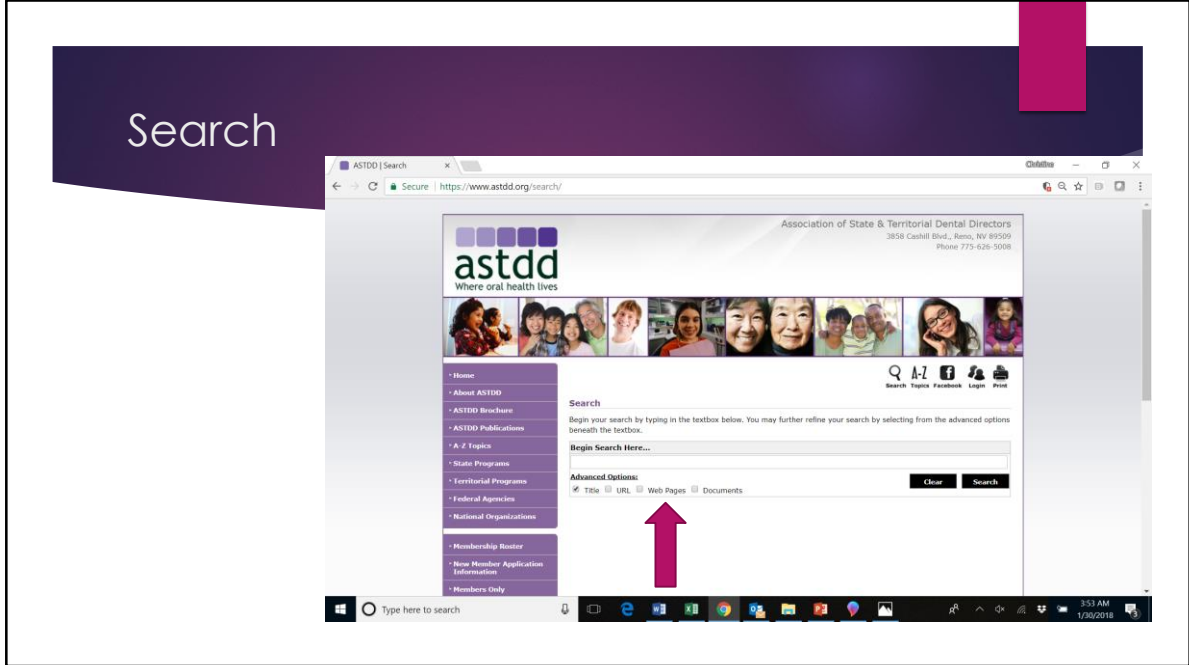


The “E” list includes several reports on the use of emergency departments for non-traumatic dental conditions and a Best Practice Approach Report on diversion programs to direct consumers to more appropriate primary care settings to manage their oral health problems.

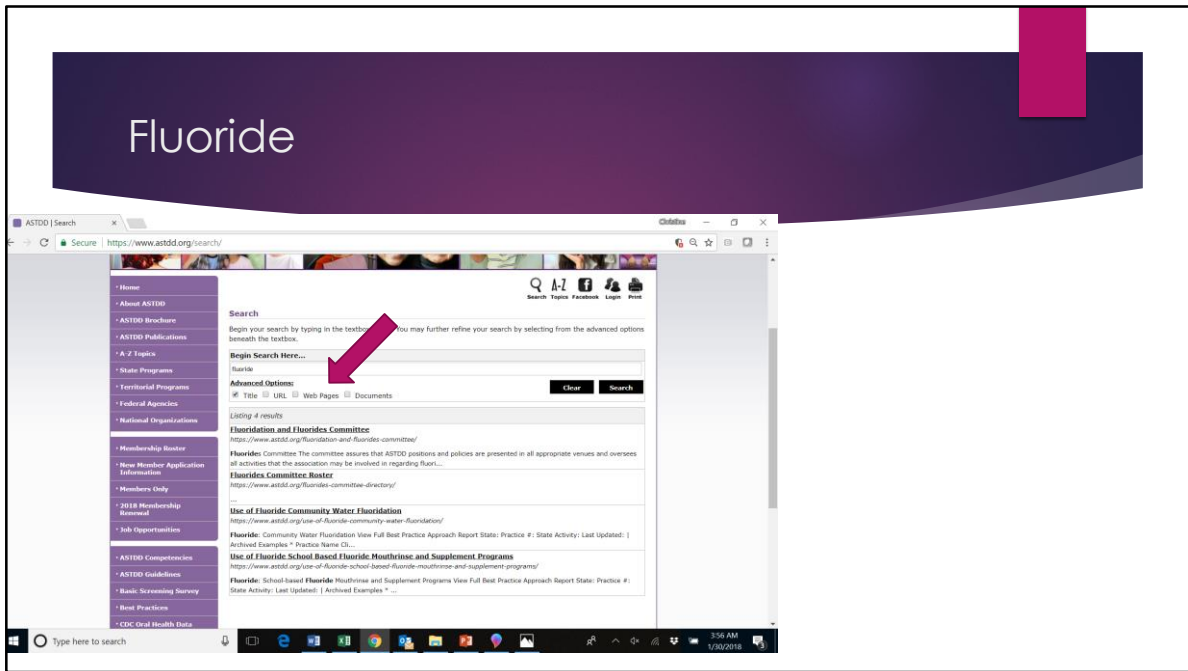
The Search Function



Another way to look for information on the website is through the search function. Click on the icon that looks like a magnifying glass at the top right side of the screen.



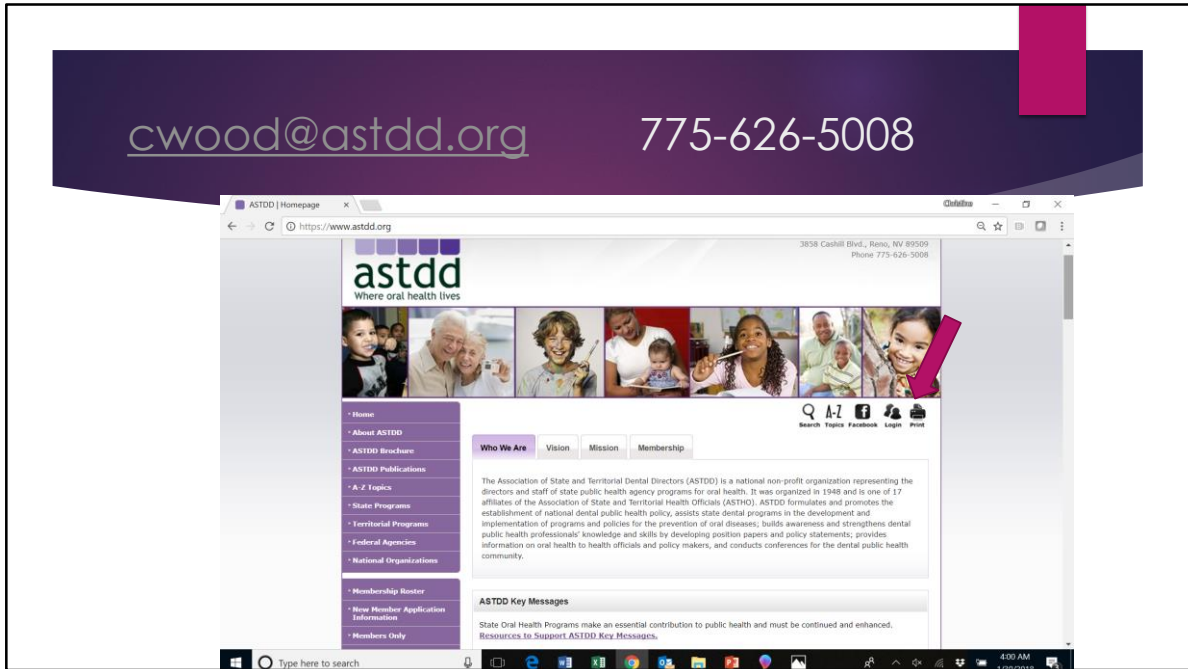
The default search option is to search by title but you can also search by URL, webpages or documents.



Searching for Fluoride by title brought up 4 results. Searching by title, URL, webpages, and documents increased the number of results to 28.

cwood@astdd.org

775-626-5008



Finally, if you want to print information from any of the ASTDD webpages, click on the print icon on the upper right hand side of the screen. By printing webpages that way, you avoid the navigation bar info from being printed.

As you can see, there is an abundance of information on the ASTDD website. We hope this tutorial will make your time spent on the website more efficient and productive. Navigation is intentionally redundant as people have their own "style" of looking for information. If you still can't find something on the website, contact Chris Wood at cwood@astdd.org.